

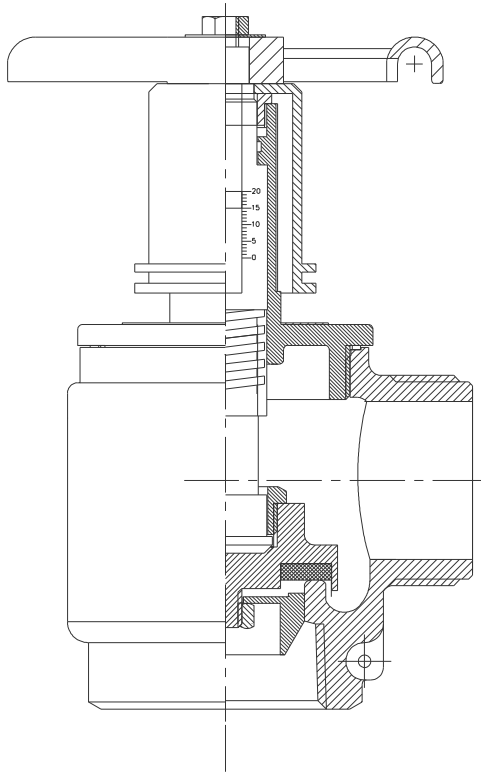
PRESSURE RESTRICTING VALVE

The Newage Pressure Restricting Valve is intended for use in wet-pipe systems and to be installed in the supply piping of standpipe systems or at the hose outlets for reducing existing high pressure in the piping system to a level that the fire hose nozzle can be managed by an operator.

Pressure Restricting valves are designed to reduce outlet pressures under flowing conditions only and are intended to be used in situations where the inlet pressure does not exceed 175 psi.



PRESSURE RESTRICTING VALVE



Technical Data

Model	38A	63A
Nominal Size	1 ½" (38 mm)	2 ½" (64 mm)
Inlet Connection	NPT - Female	
Outlet Connection	NST - Male	
Rated Working Pressure	175 psig (12 bar)	
Flow Rate	375 LPM	945 LPM
Direction of opening	Counter Clockwise	
Certification	FM Approved	

Material Specifications

Component	Material	Specification
Body	Copper Alloy	BS:1400 DCB3
Bonnet, Pressure Indicator, Seat Valve	Copper Alloy	BS:1400 DCB3
Seat washer	Rubber	BS:2752
Spindle, Adjusting Nut	Brass	BS:2874 CZ-121
Wheel nut	Stainless Steel	BS:970/4
Hand-wheel	Ductile Iron	BS:2789 420/12

Newage reserves the right to modify any specification without prior notice. It is recommended that Newage be contacted to ensure that the current issues of all technical data sheets are used.